

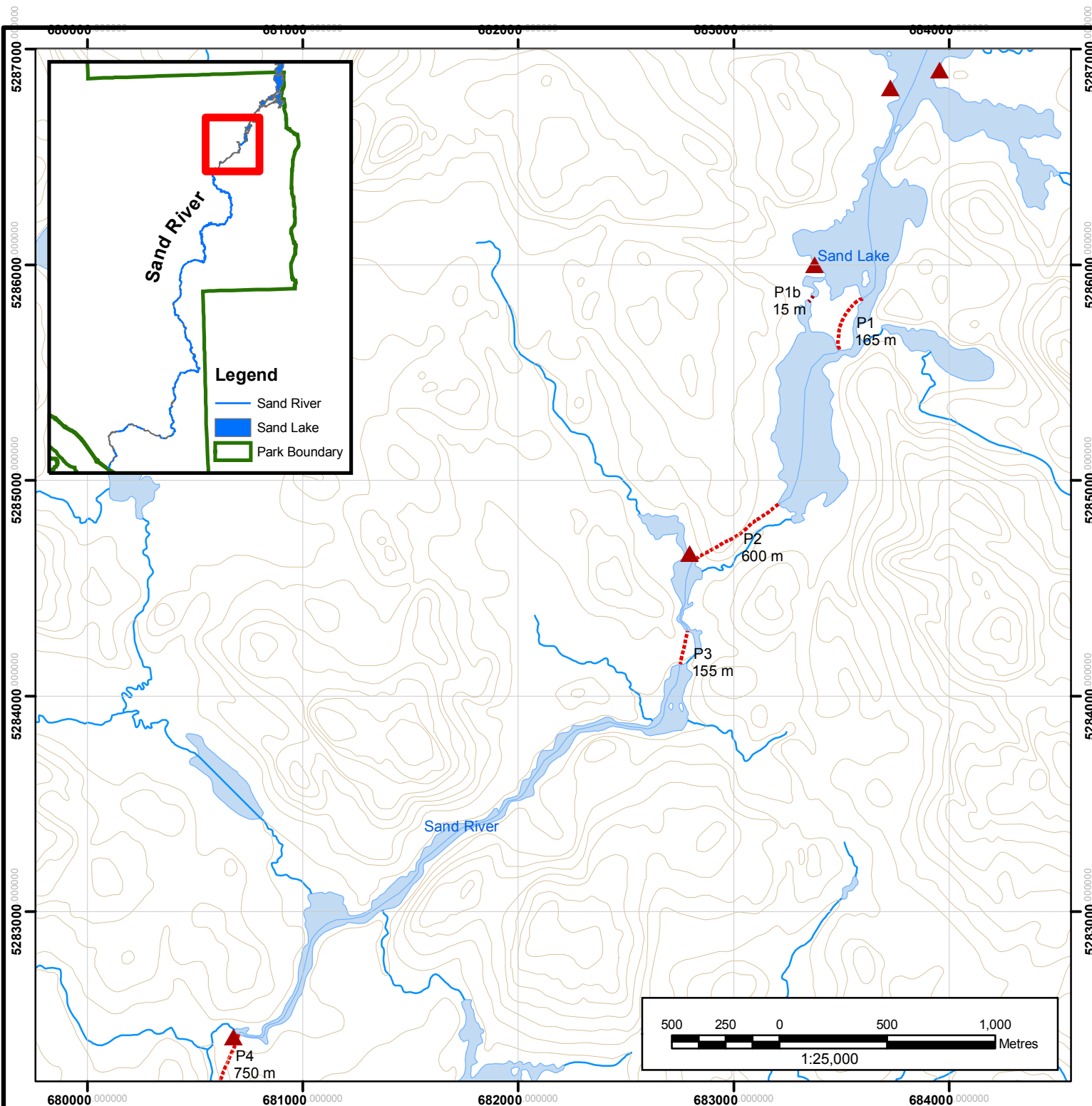
Sand River Part 2 of 9

Portage 1:

There are actually two portages leaving the south end of Sand Lake:

P1a – 165 m to the east of the Oswin Campsite on the right side of the dam; or

P1b – 15 m in a small channel on the west shore just south of Oswin Campsite, before the main channel of the river. The portage leads to an old beaver pond which empties directly into the Sand River.



Legend

- Designated Campsite
- Contour (20 metre or 65.5 ft intervals)
- Canoe Route
- Portage
- Lakes and Large Streams
- Wetlands



This map should not be relied on as a precise indicator of routes or locations, nor as a guide to navigation. The Ontario Ministry of Natural Resources (OMNR) shall not be liable in any way for the use of, or reliance upon, this map or any information on this map.

